

# Nye logistikkmoduler

DYNUG 09.11.2022

Espen Stensaas  
Martin Olavesen

# Dynamics 365 Supply Chain Portfolio

## Supply Chain Management



Predict disruptions and respond fast by digitizing your supply chain, enhancing visibility, improving planning agility, and maximizing asset productivity.

Ensure business continuity and achieve operational excellence with agile distribution and manufacturing processes on the cloud and at the edge.

## Intelligent Order Management



Intelligently orchestrate fulfillment and automate it with a rules-based system using real-time omnichannel inventory data, AI, and machine learning.

Adapt quickly to meet future order volumes and fulfillment complexities by supporting new order intake, fulfillment, and delivery partners with pre-built connectors.

## Supply Chain Insights



Make better supply chain decisions quickly by collaborating and unifying real-time data from third-party data providers, logistics partners, customers, multi-tier suppliers.

Enhance visibility and proactively mitigate risk by generating actionable insights, powered by AI-enriched with external constraints that affect your supply chain.

# Challenges faced by organizations

Visibility into multiple tiers of suppliers across the supply chain

Ability to predict capacity bottlenecks and supply disruptions

No standard for exchanging supply chain data with suppliers and other collaborators

Need for real-time reporting from suppliers and external collaborators

Reactive approach to disruptions



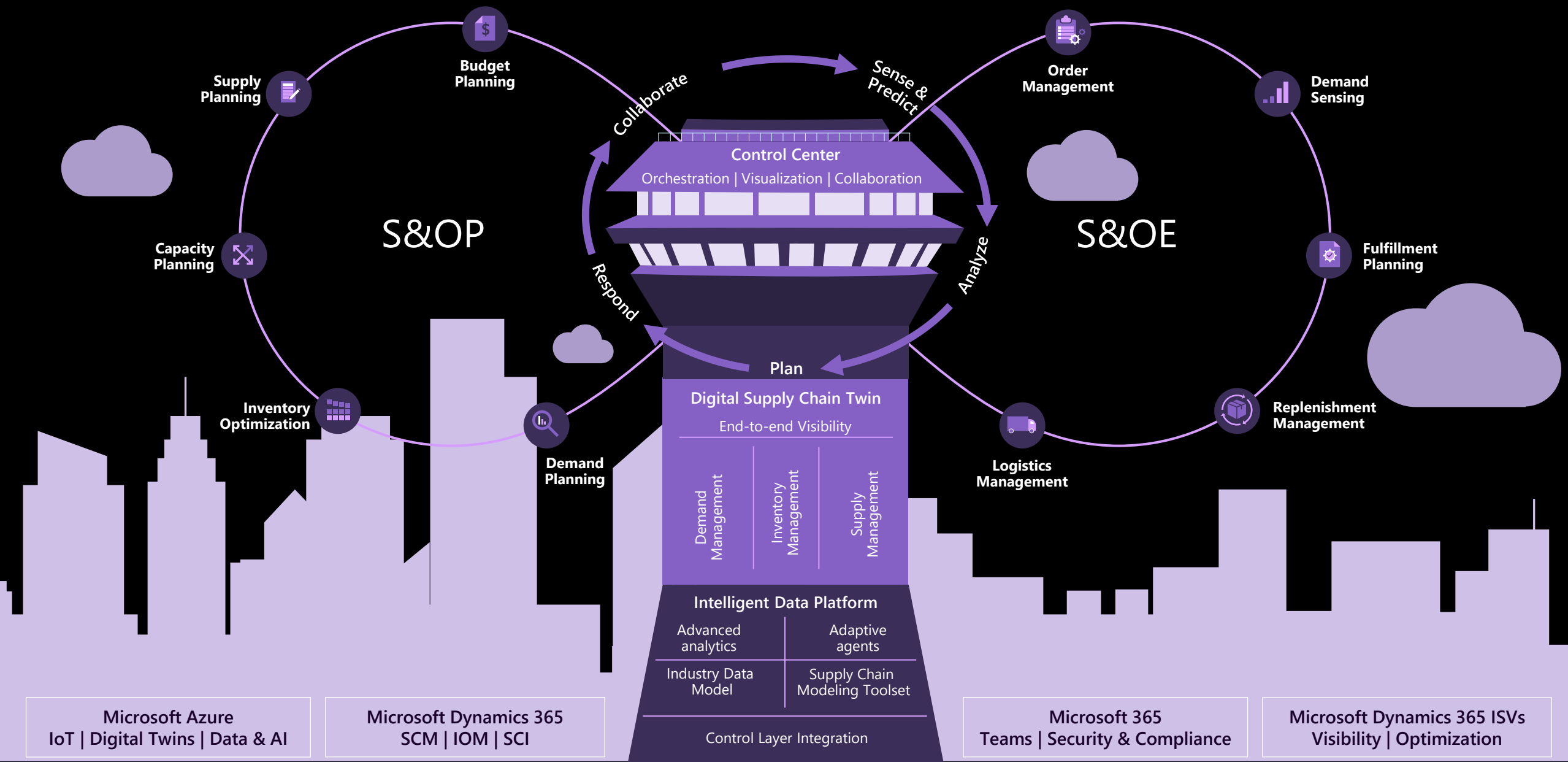


**of supply chain leaders have been  
constantly responding to disruptions  
since beginning of 2019.**

Source: Gartner® Supply Chain Executive Report: Shaping Supply Chain Disruption in a Volatile Risk Environment, May 2021.

GARTNER is a registered trademark and service mark of Gartner, Inc. and/or its affiliates in the U.S. and internationally and is used herein with permission. All rights reserved.

# Digital Supply Chain Control Tower



# Building the Control Tower: Stage 1

## Order Management & Fulfilment Orchestration



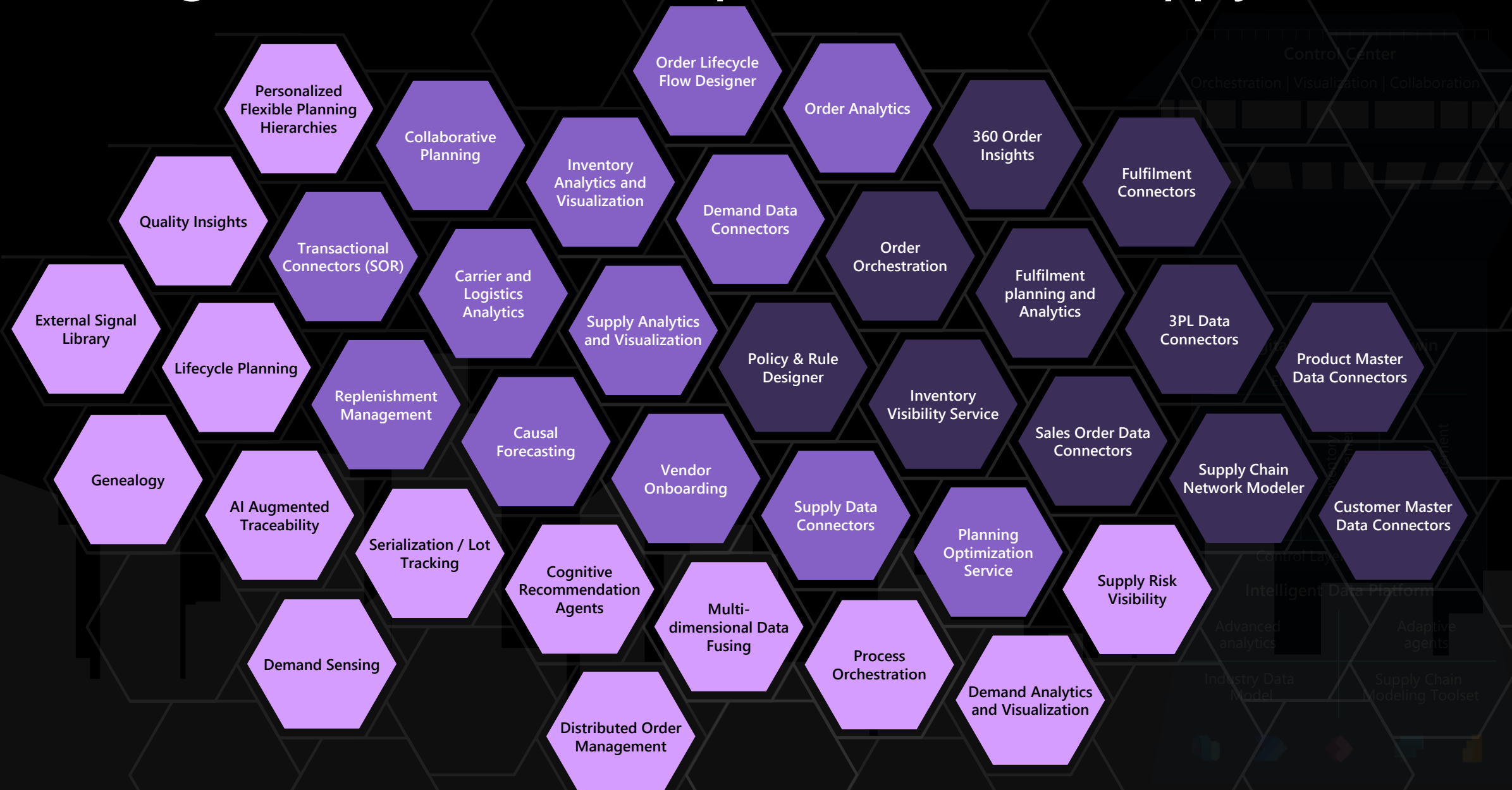


# Building the Control Tower: Stage 2



Intelligent Replenishment

# Building the Control Tower: Step N - End-to-end Supply Chain



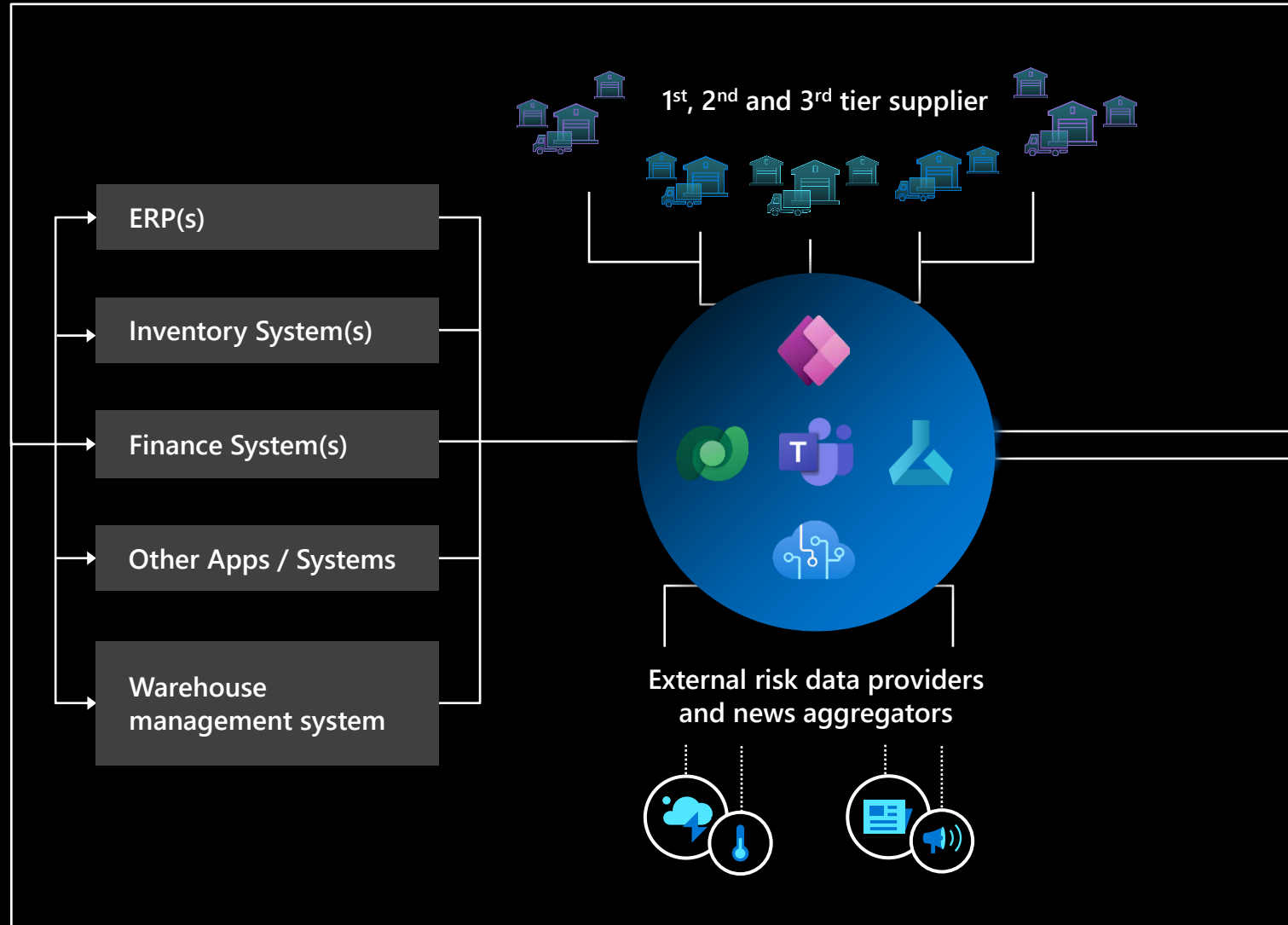




# Supply Chain Insights



# Supply Chain Insights



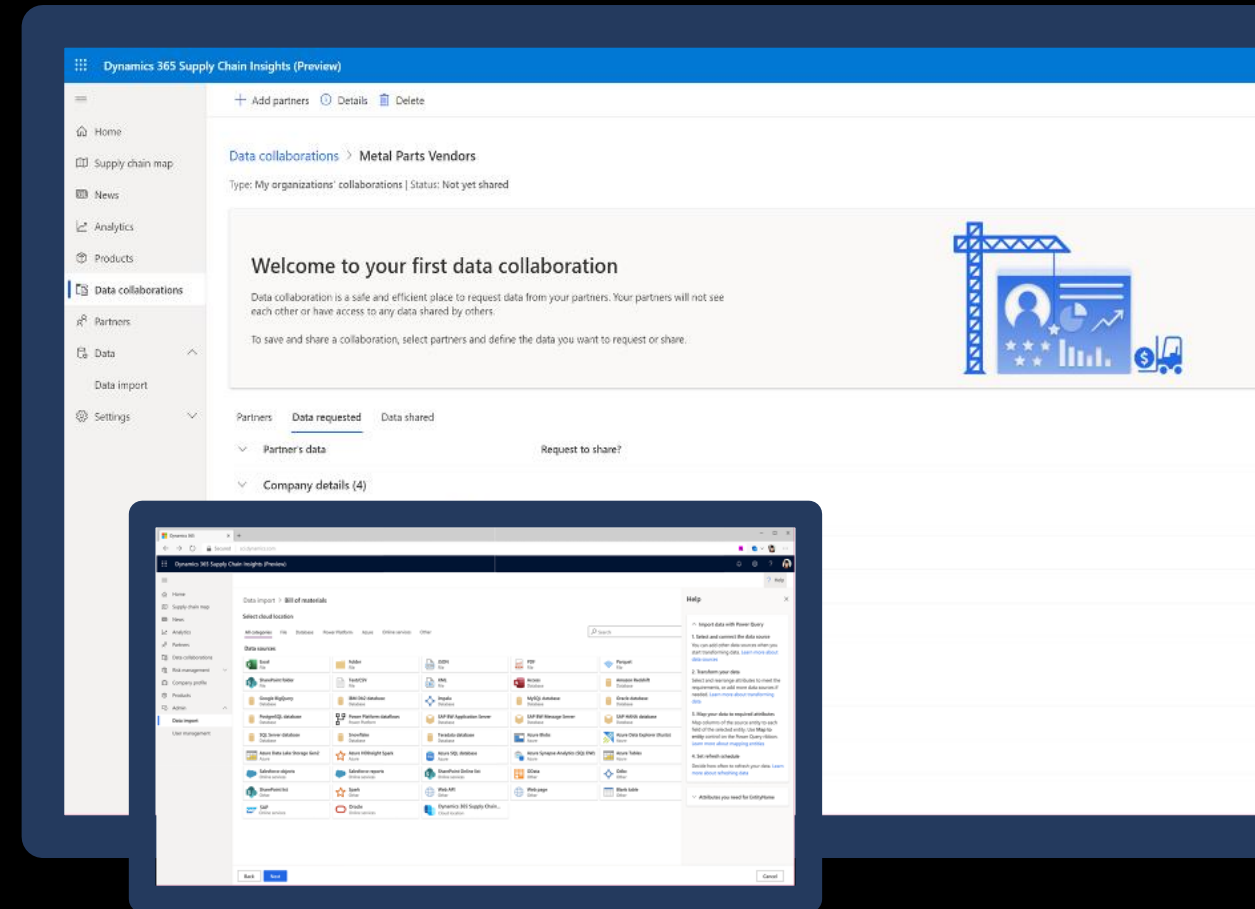
# Get operational, fast

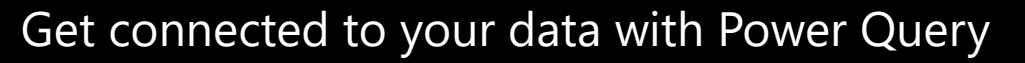
## Deploy without dependencies

Get up and running quickly by seamlessly working with existing siloed supply chain solutions, ERP, and other systems of record using Microsoft Dataverse.

## Ensure continued, uninterrupted performance

Easily map existing workflows and automate processes with your favorite connectors via Power Automate. Further customize and extend your automations with Power Apps, Azure Data, Azure ML and Azure IoT.





## Data import

Facilities ⓘ

Products ⓘ

1

Partners ⓘ

1

## Orders

1

Shipments ⓘ

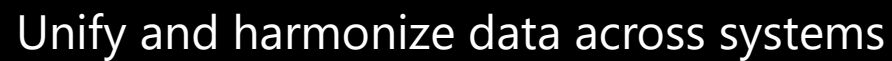


Production ⓘ



Supply ⓘ

1




Dynamics 365 Supply Chain Insights (Preview)







- Home
- Supply chain map
- News
- Analytics
- Products
- Data collaborations
- Partners
- Data
- Data import**
- Settings

Data import &gt; Products

[Help](#)

Help

- ^ Import data with Power Query

- 1. Select and connect the data source**  
You can add other data sources when you start transforming data. [Learn more about data sources](#)
- 2. Transform your data**  
Select and rearrange attributes to meet the requirements, or add more data sources if needed. [Learn more about transforming data](#)
- 3. Map your data to the required attributes**  
Map columns of the source entity to each field of the selected entity. Use Map to entity control on the Power Query ribbon. [Learn more about mapping entities](#)
- 4. Set the refresh schedule**  
Decide how often to refresh your data. [Learn more about refreshing data](#)

- Attributes you need for Products

# Enhance supply chain visibility

## Make better decisions based on impact

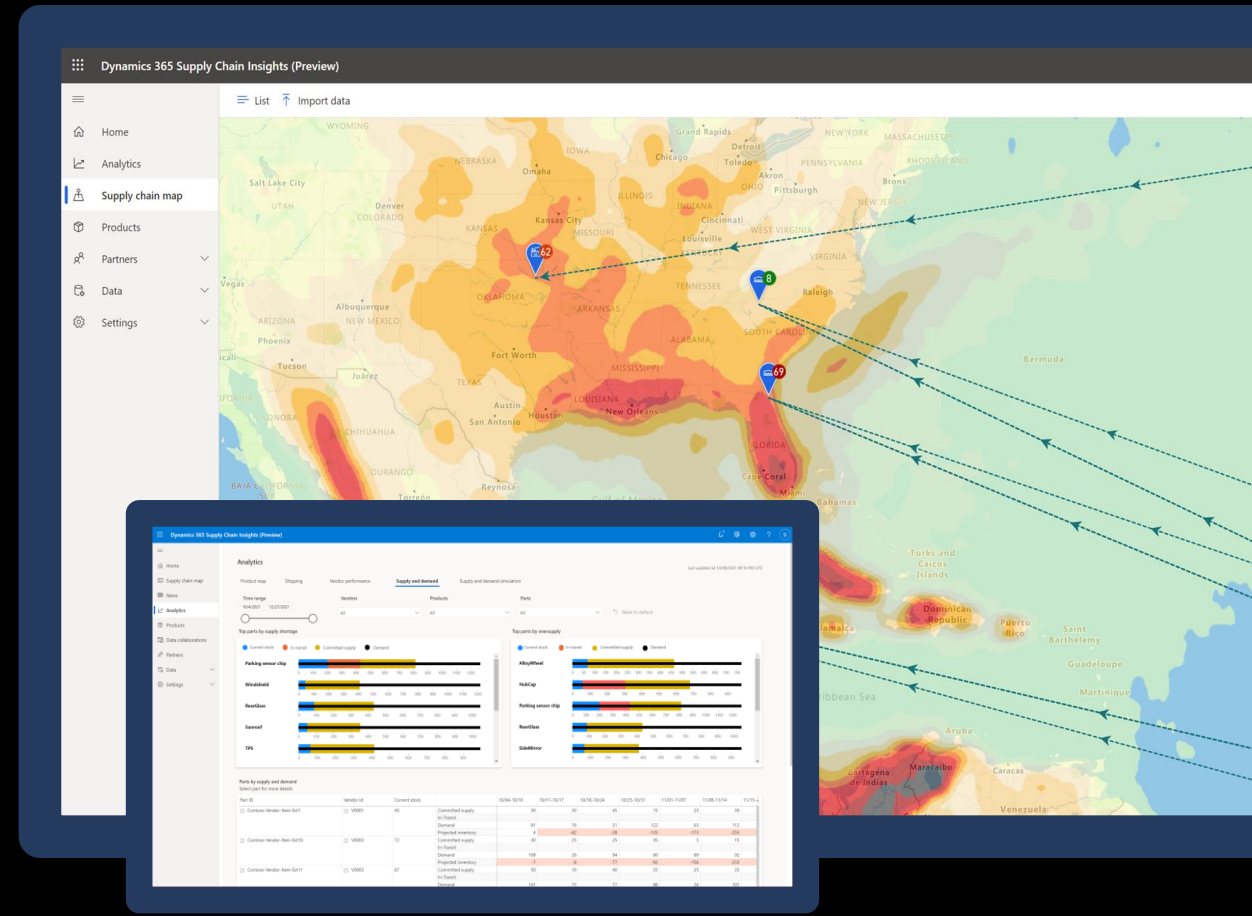
Respond intelligently to dynamic shifts in supply and demand by creating a digital supply chain twin, performing what-if simulations, and understanding the upstream and downstream impact of your decisions.

## Enhance multi-tier supplier visibility

Ensure business continuity by proactively assessing multi-tier supplier risk with AI powered news parsing of real-world events, evaluating risk ratings, and activating alternate suppliers when required.

## Ensure on-time delivery, every time

Unify supply chain data and external news events from multiple sources and generate prescriptive insights powered by machine learning to optimize planning and delivery of inbound and outbound shipments.







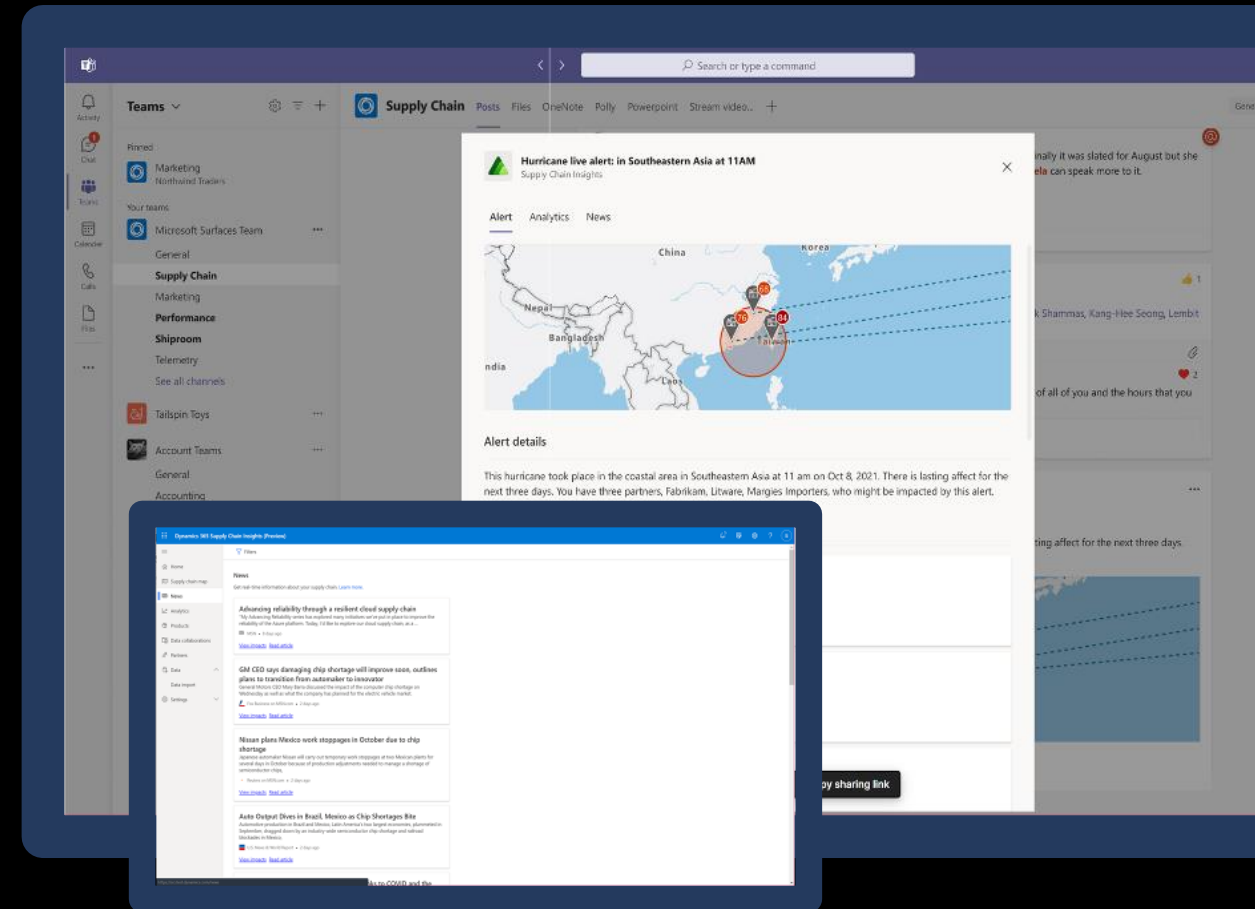
# Proactively overcome disruptions

## Collaborate in real time

Invite suppliers, partners, and customers to receive and share information, engage in collaborative spaces, and participate in risk case management. With all participants' data in one place, risks are identified early, and the entire business ecosystem is aligned.

## Automate risk response

Rapidly respond to risks, identified with surveys, through case management by leveraging machine learning. Automate the process, end to end, with triggers and actions that are sent through ERP or your management system with Power Automate.



Get more insights by connecting with partners

Dynamics 365 Supply Chain Insights (Preview)

8

SI

Home

Supply chain map

News

Analytics

Partners

Data collaborations

Company profile

Products

Admin

Import partners

Invite partner

All partners

Find partners

Incoming requests (0)

Sent requests (1)

Imported (6)

My partners (3)

Search by partner name

Filters

Not connected

15 results

B

Adatum Corporation

Professional and technical services

Connect

J

Fabrikam, Inc

Manufacturing

Connect

Proseware, Inc

Manufacturing

Connect

First Up Consultants

None

Connect

P

VanArsdel, Ltd.

Transportation and warehousing

Connect

P

Wide World Importers

None

Connect

Northwind Traders

Connect

## Request data from a partner to get deeper insights

Dynamics 365 Supply Chain Insights (Preview)

Home

Supply chain map

News

Analytics

Partners

Data collaborations

Company profile

Products

Admin

+ New collaboration

Data collaborations

The data collaboration is a safe and efficient place to request and share data. [Learn more](#)

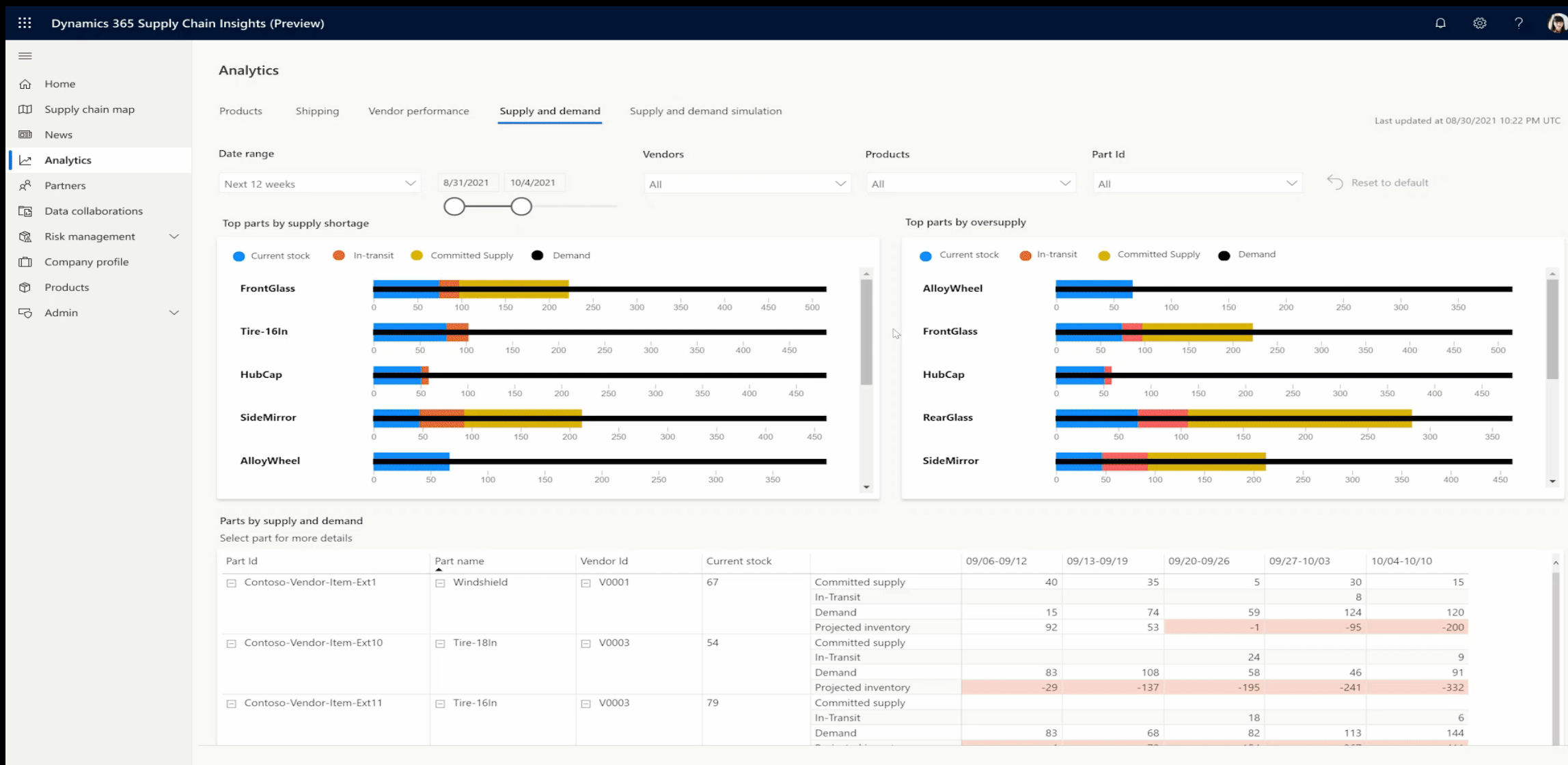
My organizations' collaborations

Partners' collaborations

Name	Status	Partners	Modified on
Fabrikam Collaboration	Active	1	3:30 PM, 10/19/2021

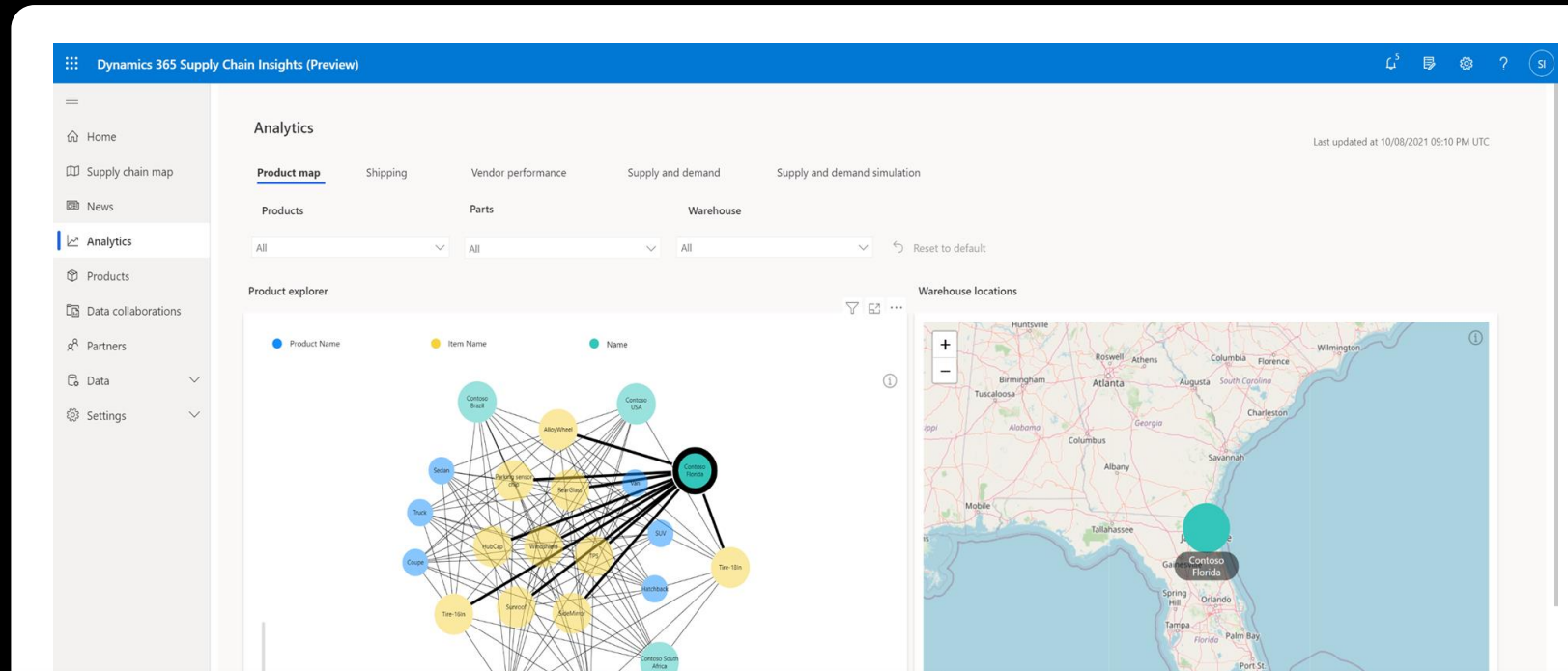


# Bring more data and enable risks related to supply chain



# Dynamics 365 Supply Chain Insights overview

Make better decisions with proactive risk mitigation



## Modern open platform

- Pre-built connectors
- Seamlessly work with existing systems
- No-limit cloud scalability

## Secure and seamless collaboration

- Share data on a need-to-know basis
- Streamline risk mitigation
- Real time stakeholder collaboration

## Real-time visibility

- Discover multiple tiers of suppliers
- What-if analysis at scale
- AI-powered news curation



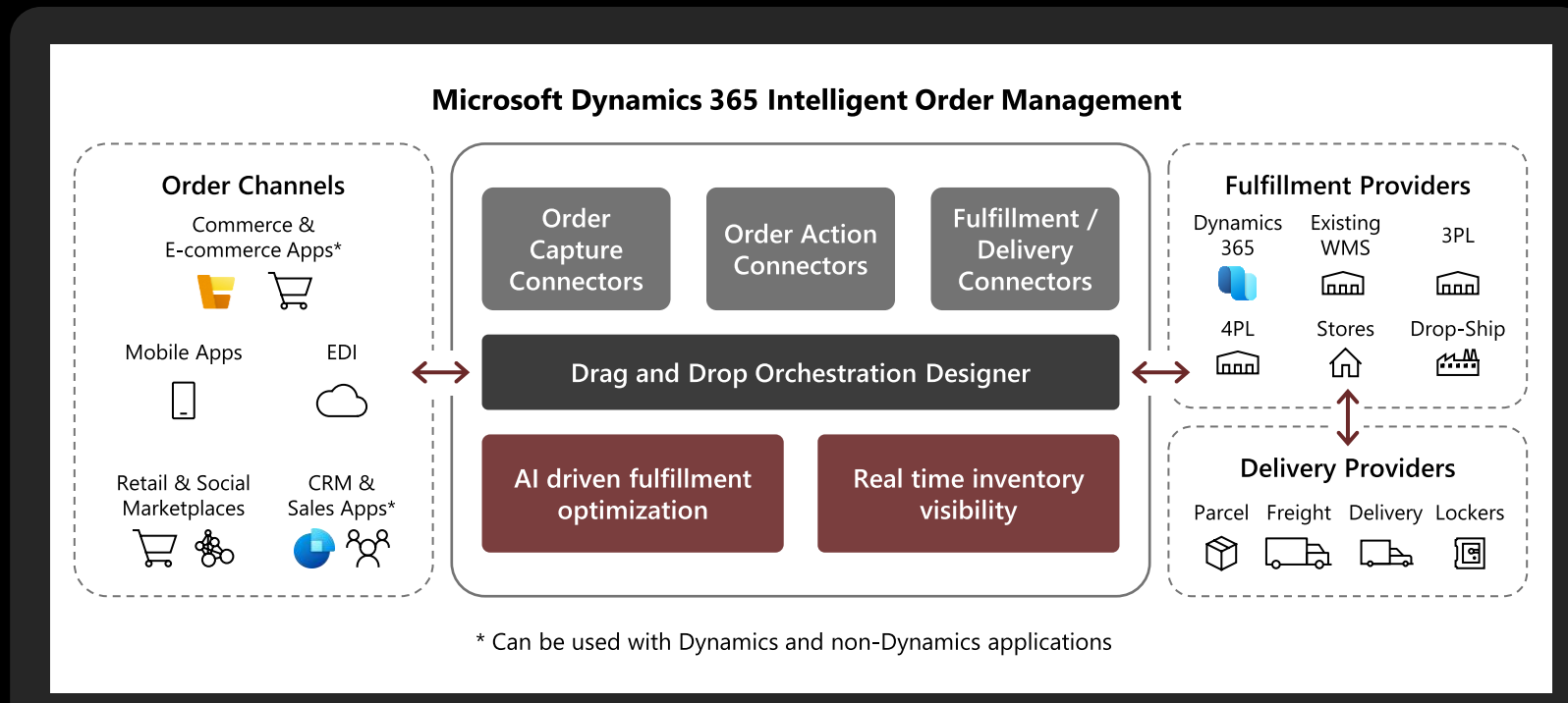


# Intelligent Order Management



# Dynamics 365 Intelligent Order Management

Adapt quickly and fulfill efficiently



## Modern Open Platform

- Pre-built platform connectors
- Existing enterprise system integration
- No-limit cloud scalability

## Intelligent Fulfillment

- Event driven orchestration
- AI & rules-based fulfillment
- Streamlined return management

## Real-time Visibility

- Actionable fulfillment insights
- Omnichannel inventory data
- Cross-organization single order view

# Intelligent Order Management Key Capabilities

## Automate and optimize fulfillment



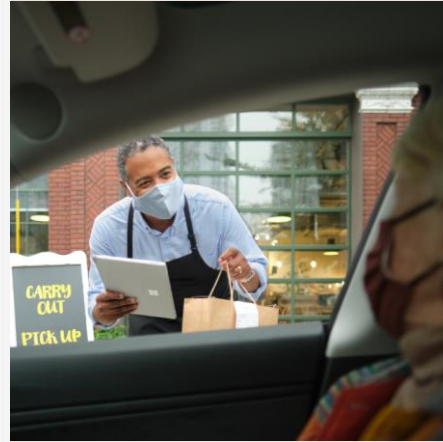
Use rules-based fulfillment orchestration, with real-time inventory and AI, to optimize order flows with effective exception handling.

## Manage the entire order lifecycle



Gain real-time insights into every order, from intake to fulfillment, using customizable integrated dashboards.

## Adapt faster to changing business models



Easily model and automate responses to fulfillment constraints using the policy designer to configure order flows.

## Get up and running quickly



Scale order management using prebuilt connectors to order source, delivery and third-party logistics partners.

## Enhance your customers' experience



Increase customer satisfaction by providing greater flexibility, improved transparency, and on time and in full order fulfillment.

# Automate and optimize fulfillment

Use rules-based fulfillment orchestration, with real-time inventory and AI, to optimize order flows.

## Intelligent distributed order management

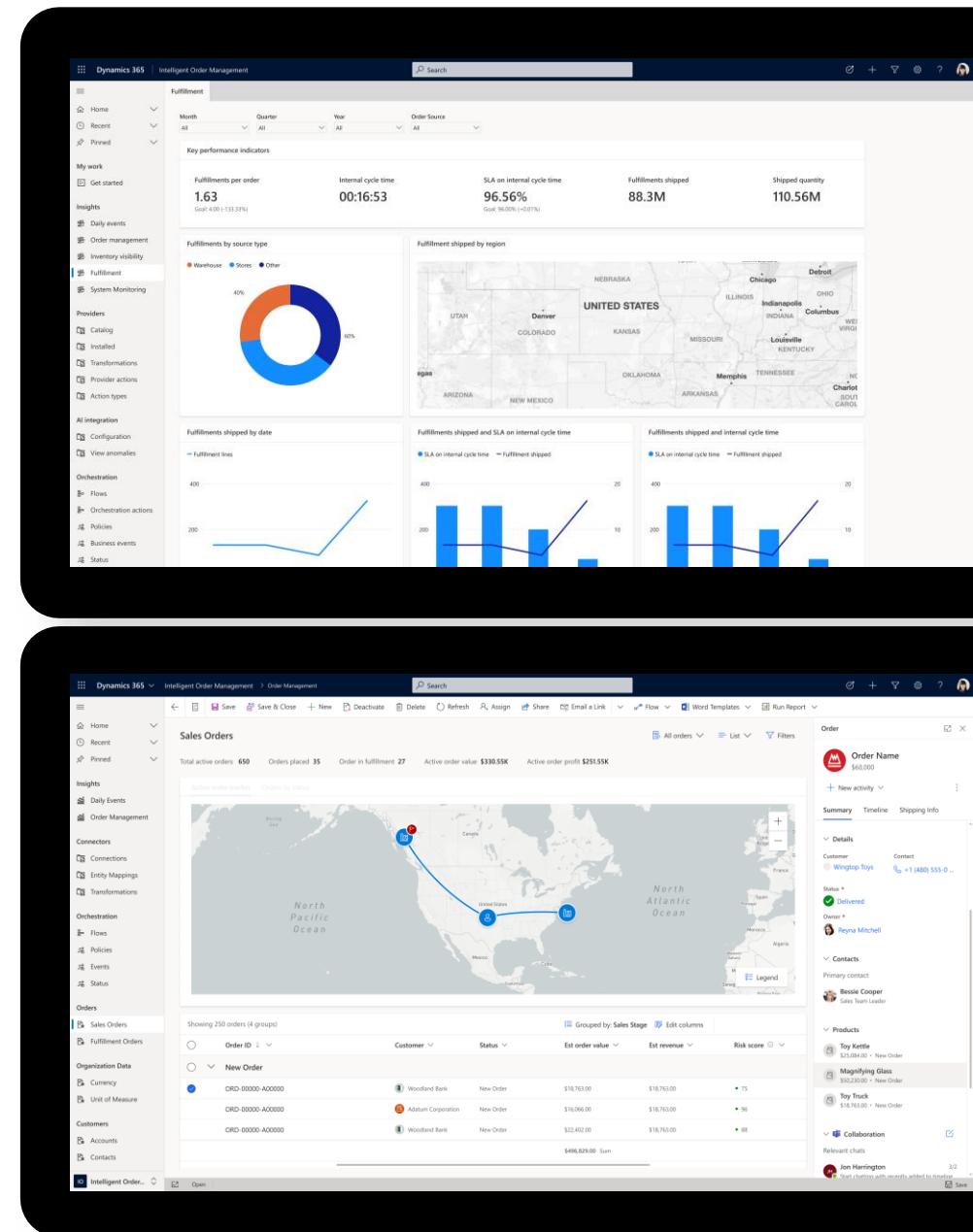
A single solution that performs rules-based order-fulfillment orchestration using real-time inventory and AI.

## Model and automate responses to order-fulfillment constraints

Free yourself from the one-size-fits-all order journey. Customize as many order flows as you need to meet the unique requirements of your business.

## Handle customer returns with ease

Streamline returns management and enable flexible return scenarios to give customers the best possible outcome.



# Manage the entire order lifecycle

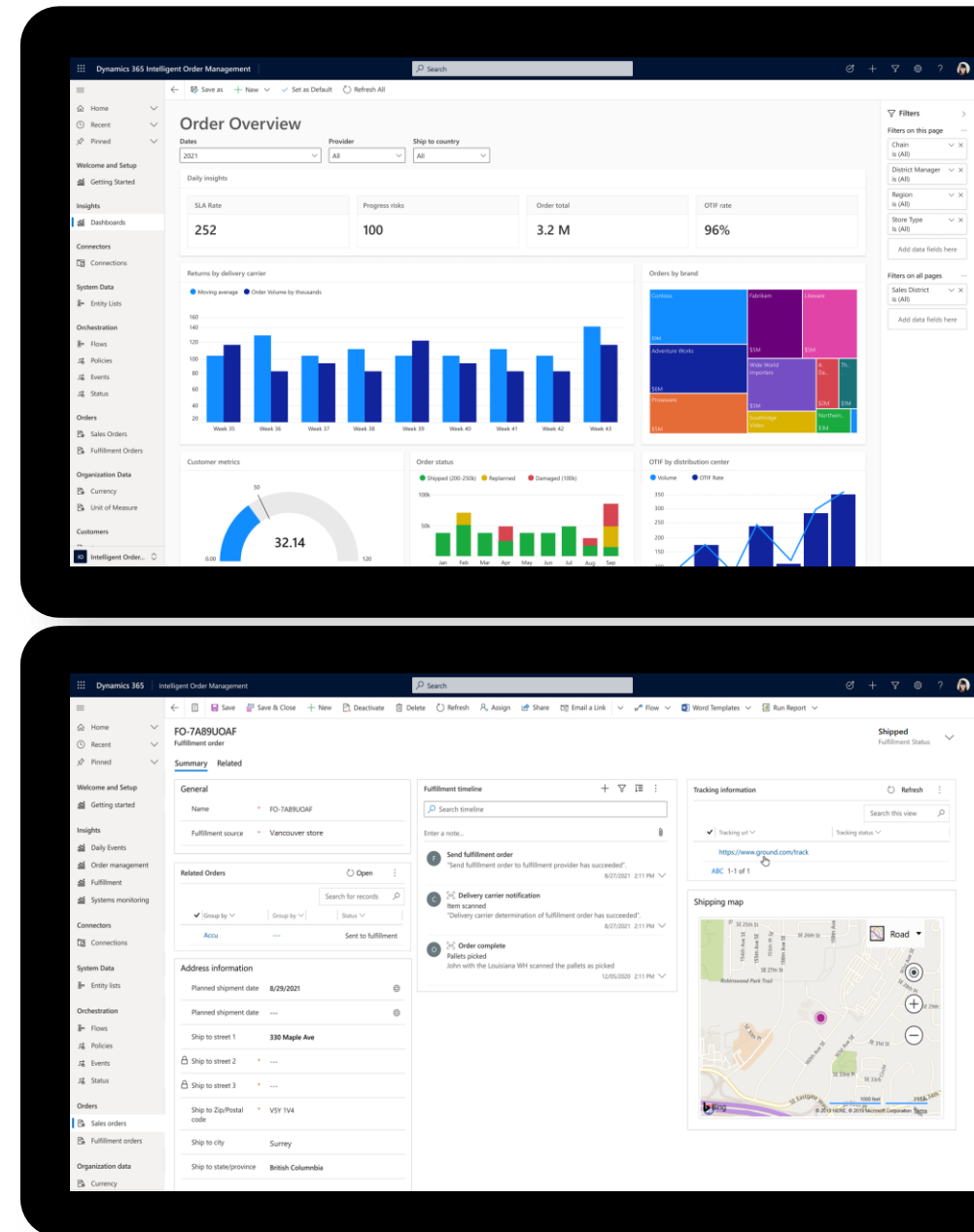
Gain real-time insights into every order, from intake to delivery, using customizable integrated dashboards.

## Proactively address problems using actionable insights

Use AI-based classification and anomaly detection models to proactively identify and address fulfillment constraints and improve delivery times while reducing costs.

## Optimize stock levels

Access a single global view of your inventory positions across all legal entities in real time to ensure that the right products are available in the right place at the right time.



# Adapt faster to changing business models

Easily model and automate responses to fulfillment constraints using the embedded policy designer.

## Proactively respond to disruptions and constraints

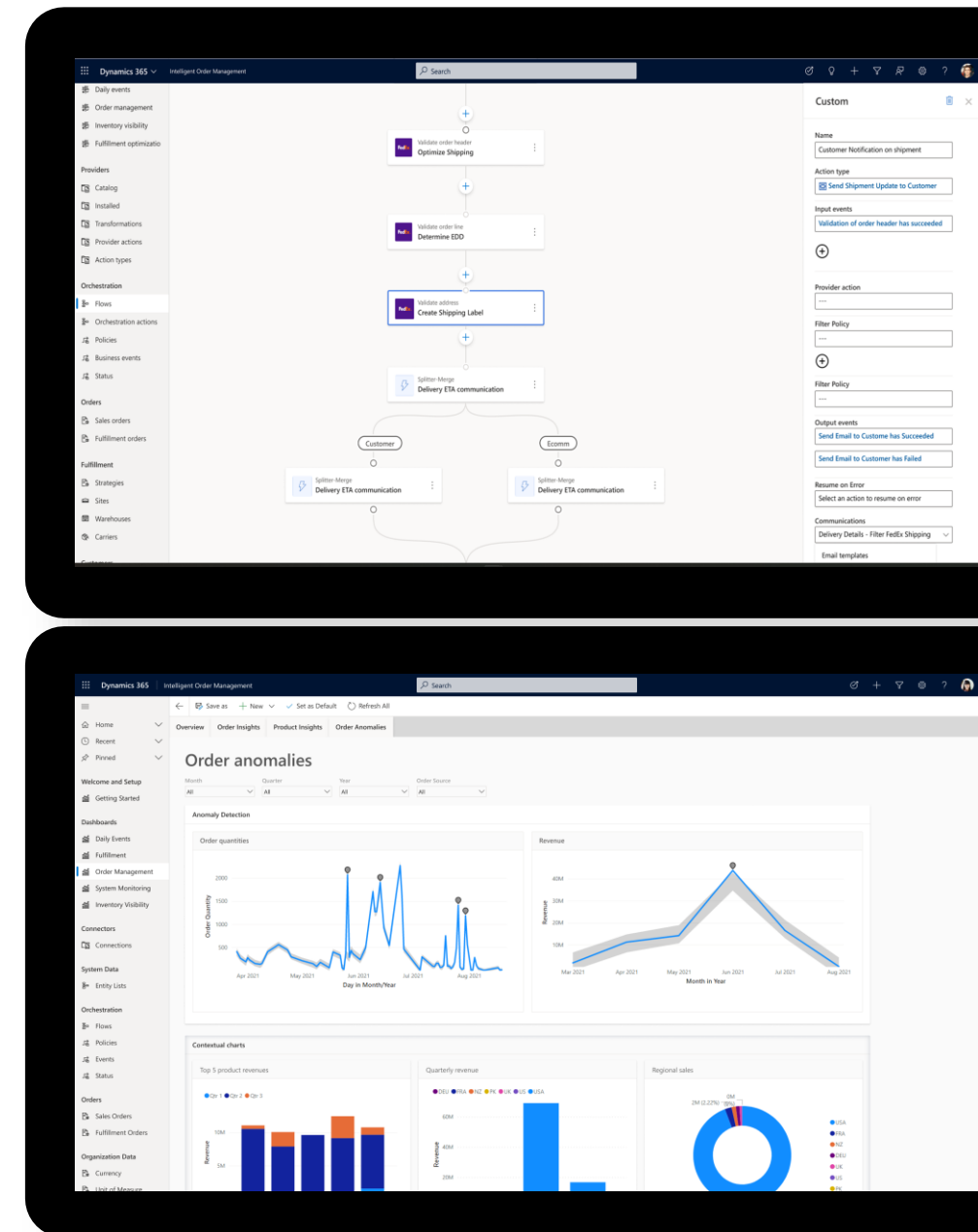
Give your supply chain team the autonomy to respond to changing requirements with easy-to-use journey orchestration–designer tools to modify the order journey.

## Keep pace with the continuing evolution of e-commerce

Enable nimble operations to capitalize on new opportunities faster using an adaptable system that can accept orders from anywhere.

## Rapidly design and build order flows using drag-and-drop tools

Accelerate deployment with a visual interface that lets business users quickly change order-management rules across multiple channels as needs evolve.





# Get up and running quickly

Augment your business offering with prebuilt connectors to an ecosystem of partners.

## Maximize your existing investments

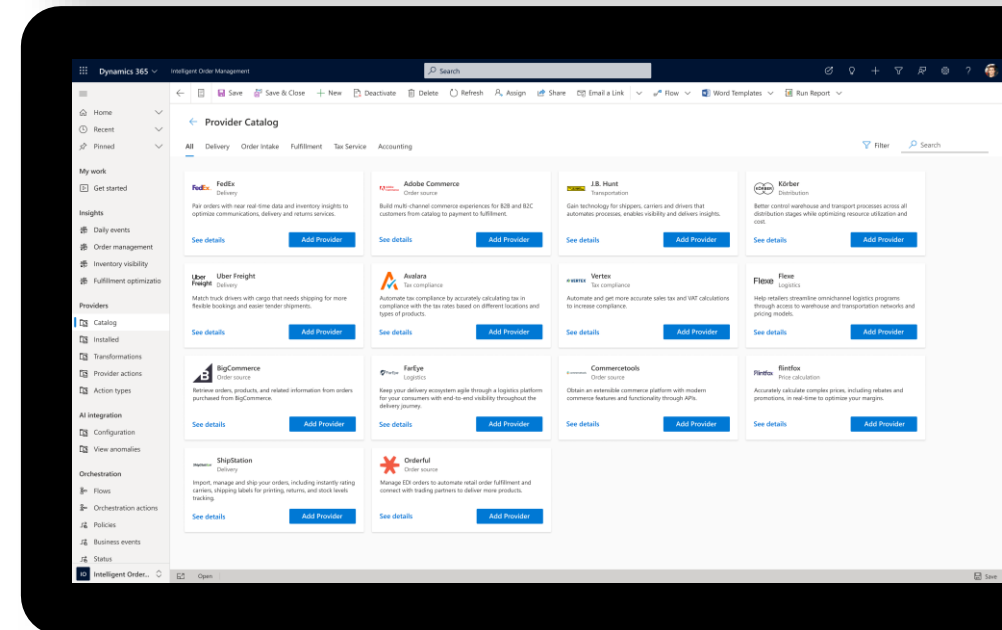
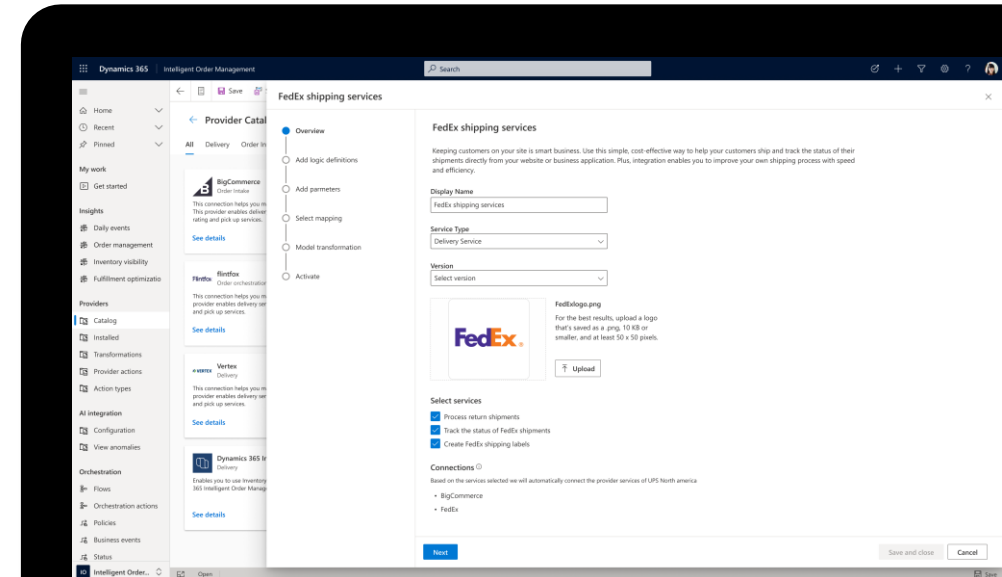
Use Intelligent Order Management with your current enterprise systems for easy onboarding and configuration, and seamlessly synchronize data using MS Dataverse.

## Deploy without dependencies

Seamlessly work with Dynamics 365 and other business applications to automate and optimize order fulfillment.

## Scale quickly for peak order volumes

Capitalize on seasonal demands and organic growth using prebuilt connectors to add order intake, fulfillment, and delivery partners.



# Enhance your customers' experience

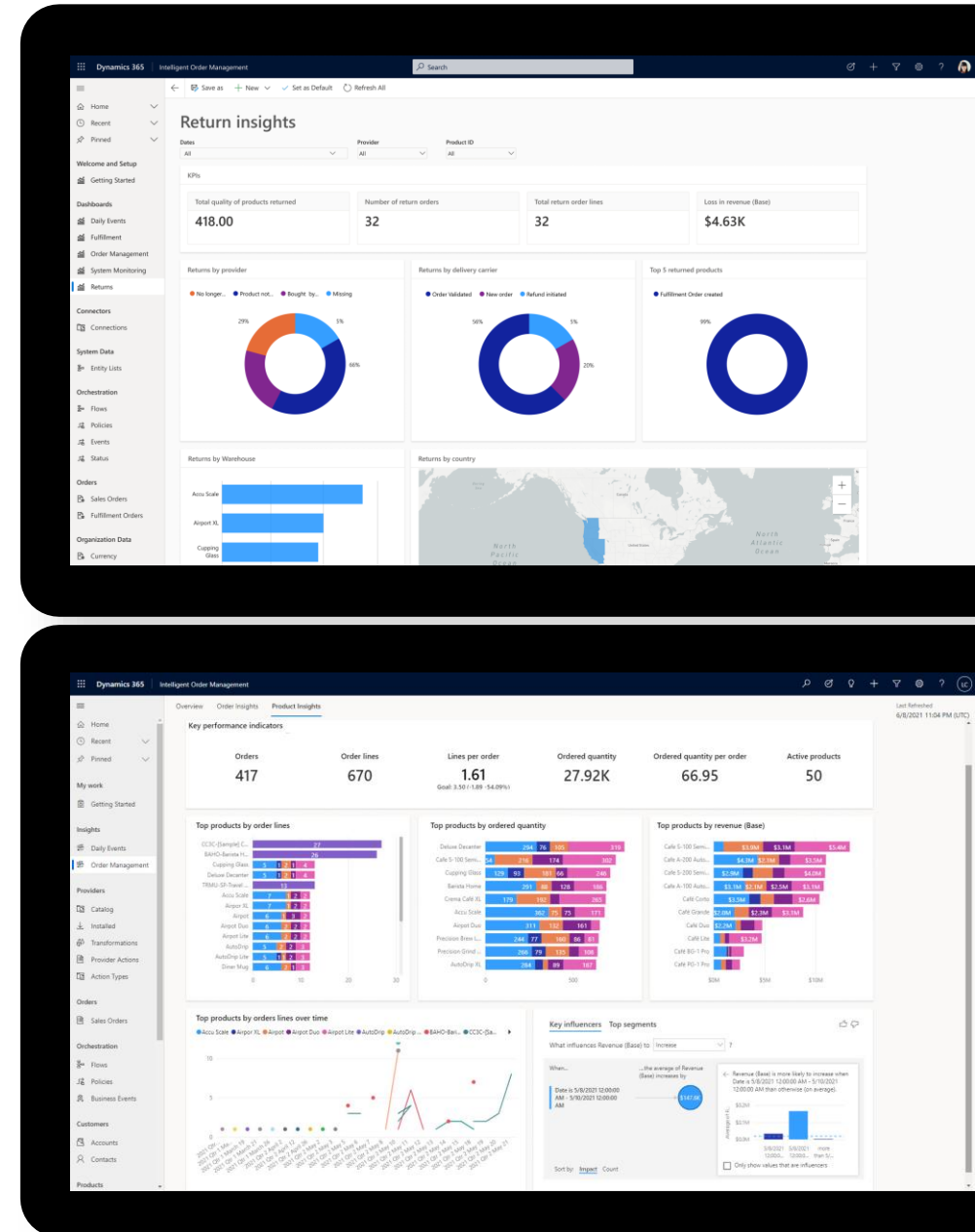
Provide greater flexibility, improved transparency, and on-time delivery every time.

## Meet customers where they are with omnichannel fulfillment

Give customers the fulfillment flexibility they want, including home delivery, buy in-store, buy-online/pick up in-store, and curbside pickup.

## Provide real-time inventory and order status

Improve the buying experience by giving customers greater visibility into inventory availability and order status, from purchase to delivery.



# Reimagining omnichannel commerce experiences



“ Together with Microsoft, we will combine the immense power of technology with the vast scale of our infrastructure to help revolutionize commerce and create a network for what's next for our customers.”

[Raj Subramaniam](#)

FedEx President and COO



“ We're bringing data and insights from the FedEx network together with the Microsoft Cloud, starting with Dynamics 365, to help organizations accelerate their digital transformation across their business operations so they can offer customers more integrated ways to shop, and faster, more efficient deliveries.”

[Satya Nadella](#)

Microsoft CEO

# FedEx + Microsoft Dynamics 365

## Intelligent Order Management



2-day delivery  
and more...

### Transportation optimization

Pair your orders with live transportation network and inventory data for improved insights on:

Transportation service to proactively detect and overcome delays and disruptions.

Selection of the most effective fulfillment location in a cost-effective manner.

Cost efficient 2-day delivery.



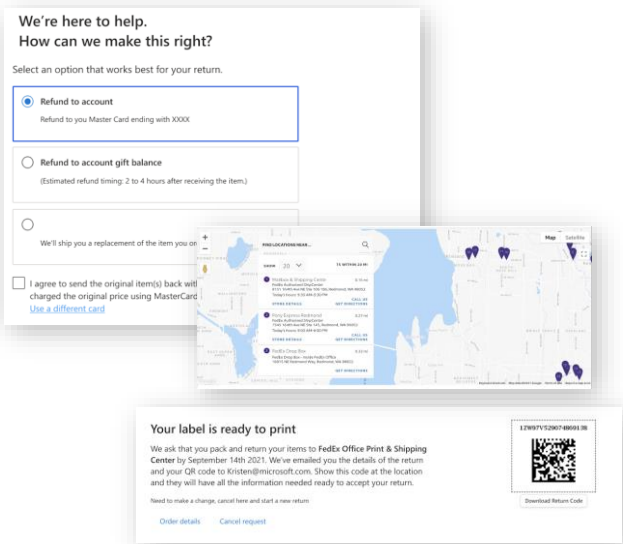
### Frictionless returns

Offer convenient, frictionless returns that inspire loyalty and differentiate your brand.

Branded workflow and status communications.

Over 60,000 FedEx drop-off locations and convenient at-home pick ups.

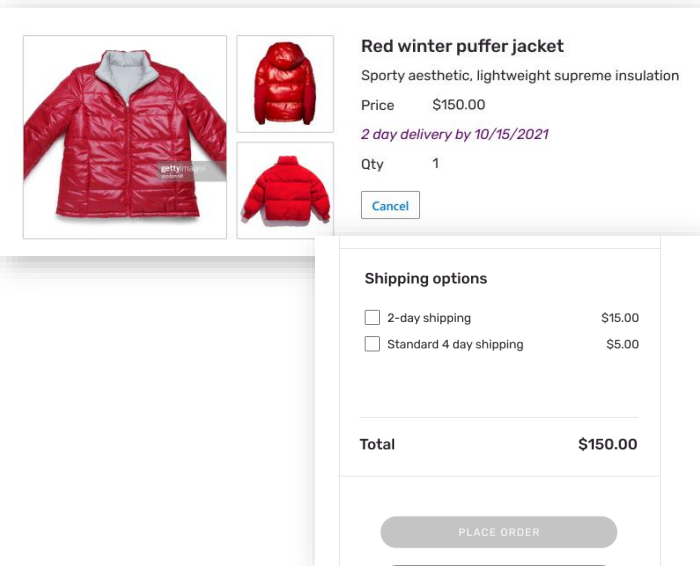
Environmentally sustainable returns through paperless no-box returns and print-less QR codes.



### Near real-time status

Provide consumers confidence with near real-time delivery status.

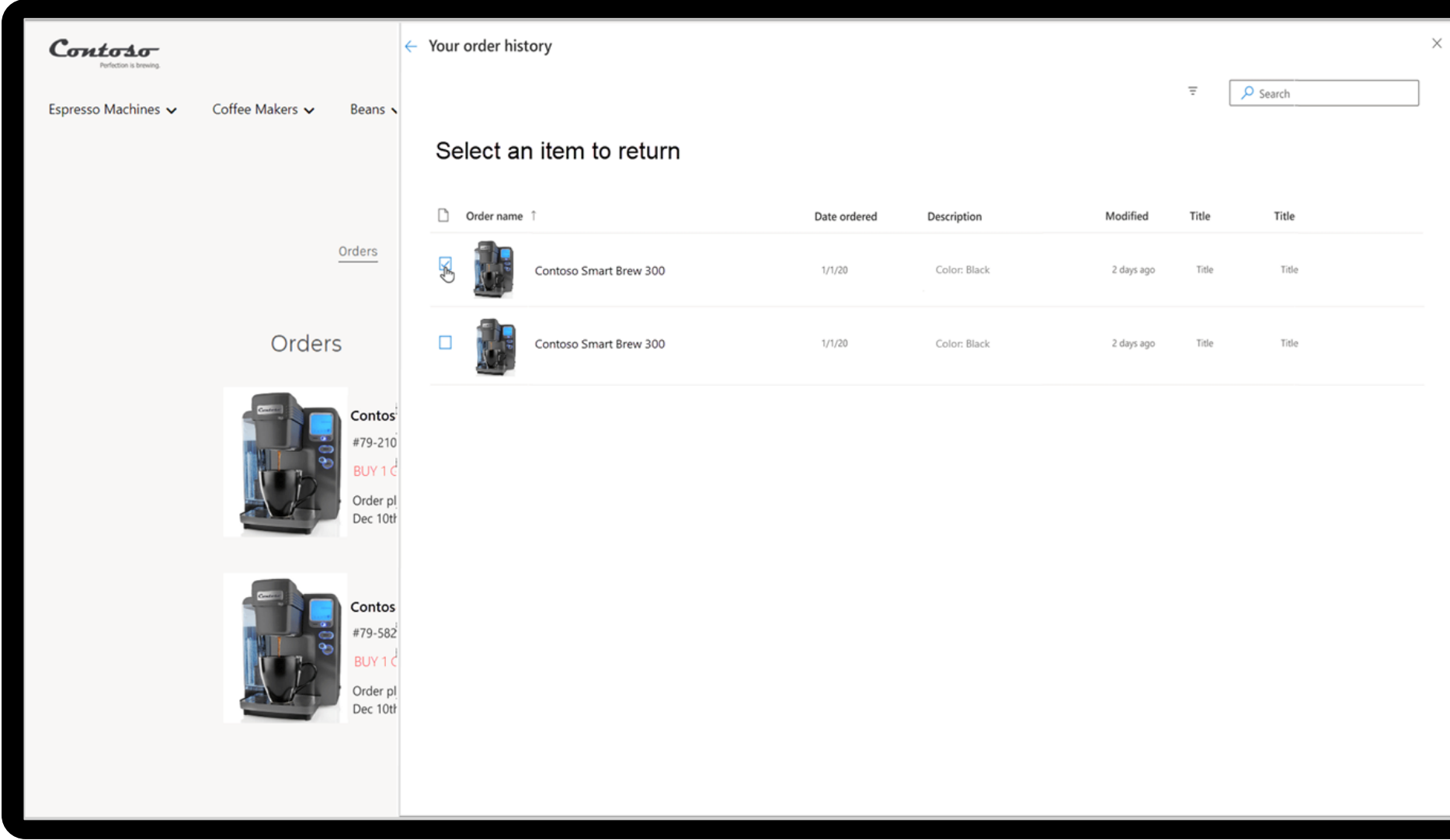
Real-time data feed into brand website for delivery dates and proactive delay predictions.



# Intelligent Order Management Return Orders

## Intelligent Order Management Portal

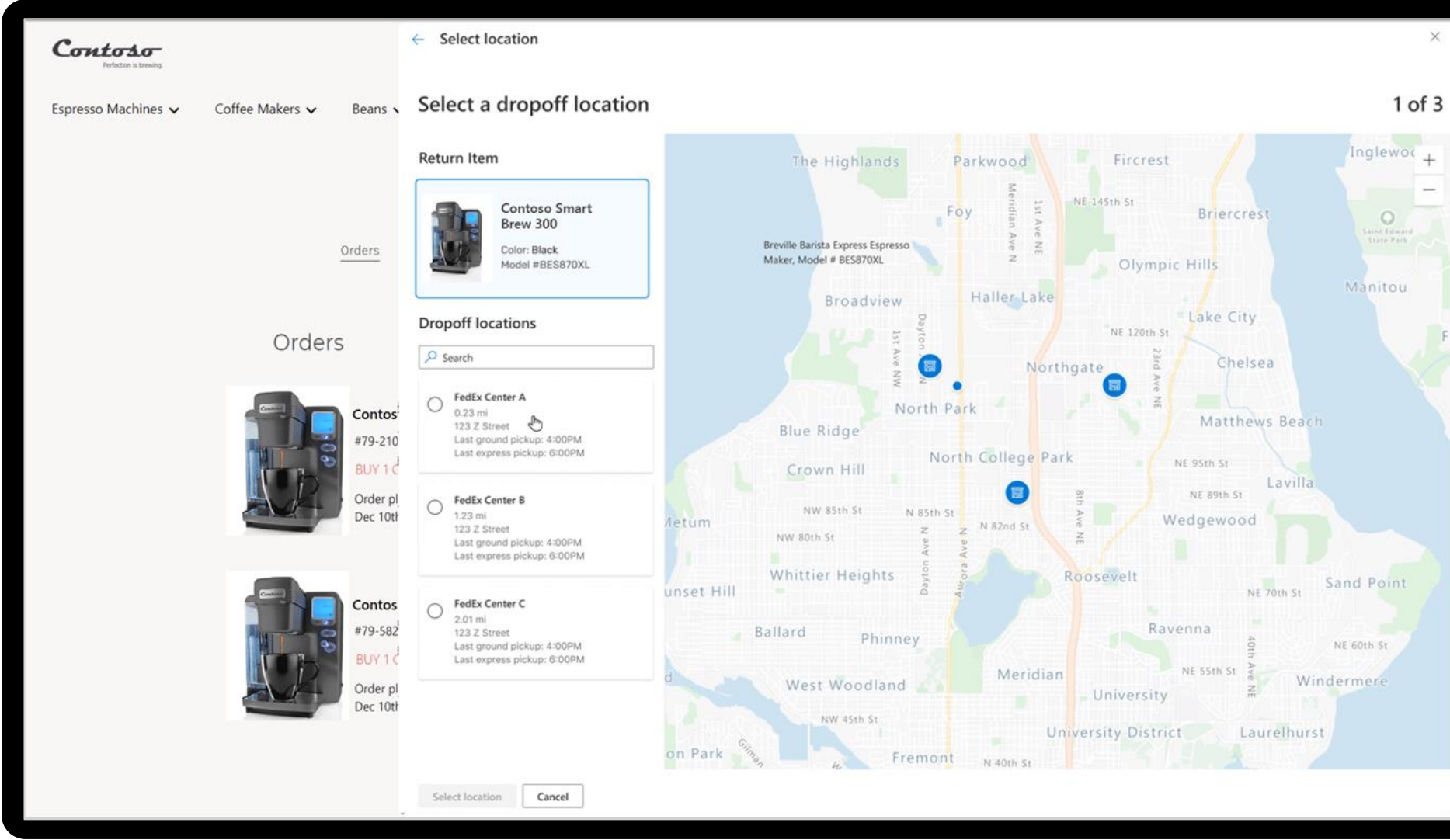
Show the customer their latest purchases and can select items to return



# Intelligent Order Management Return Orders

## Intelligent Order Management Portal

Possible drop-off locations for carrier






# Intelligent Order Management Return Orders

## Intelligent Order Management Portal


QR codes generated to complete return at drop-off location

Orders

Orders



Contoso S  
#79-21016  
1 product t  
Order plac  
Dec 10th 2



Contoso S  
#79-58211  
1 product t  
Order plac  
Dec 10th 2

Confirm

Confirm and finish

1. Type of return

Refund to account  
Refund to you Master Card ending with XXXX

Edit

2. Select return location

FedEx Office Print & Ship Center  
16815 NE Redmond Way 220, Redmond, WA 98052  
Get directions  
Call us  
Today's hours: 8:00 AM-6:00 PM

Edit

3. Confirm and finish

Use your QR code to bring with you at the location selected.

Order name ↑

Order 1

1/1/20

Color: Black  
Contoso Smart Brew 300  
Maker, Model # BES870XL

2 days ago

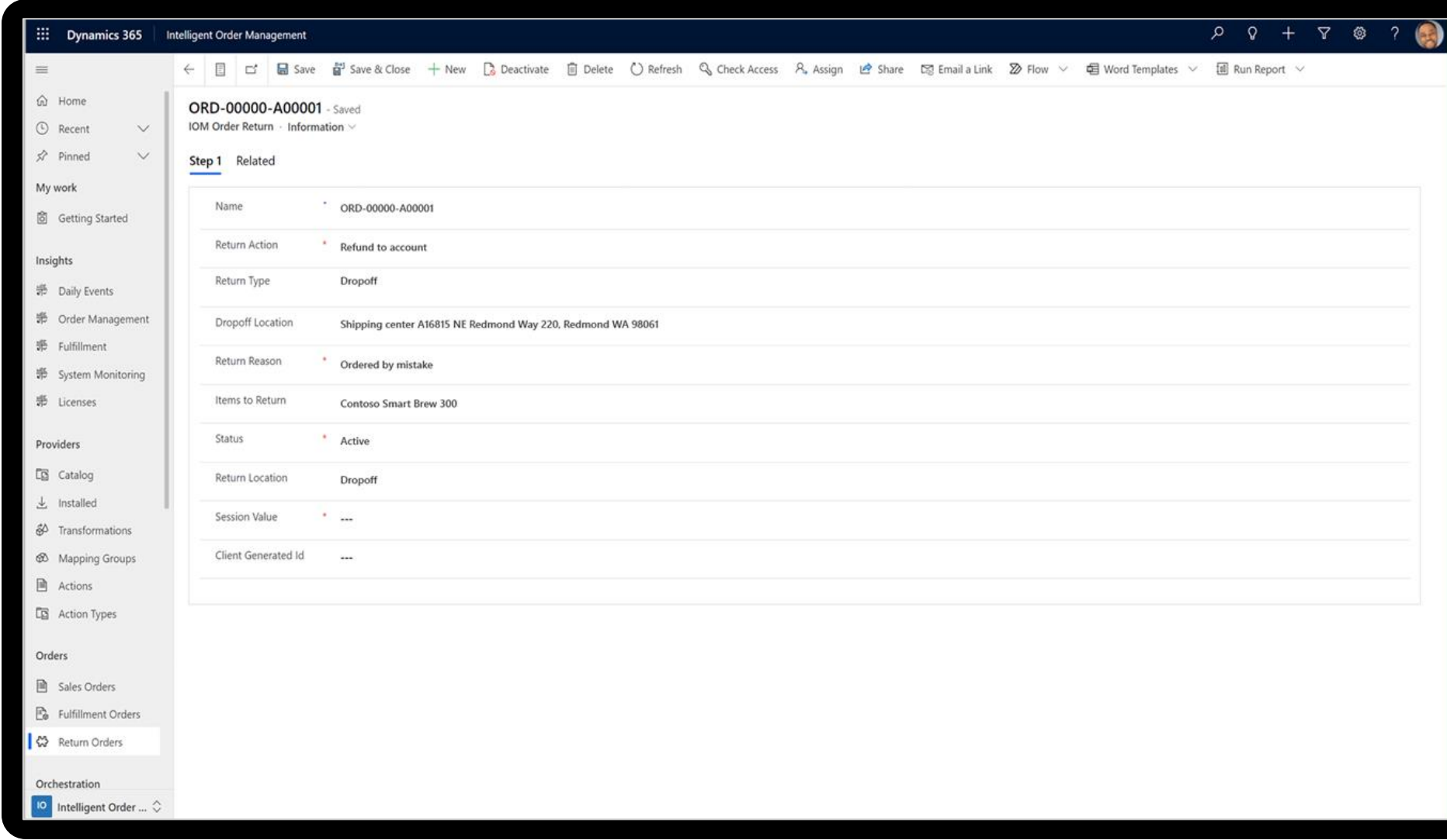
Title

Title

# Intelligent Order Management Return Orders

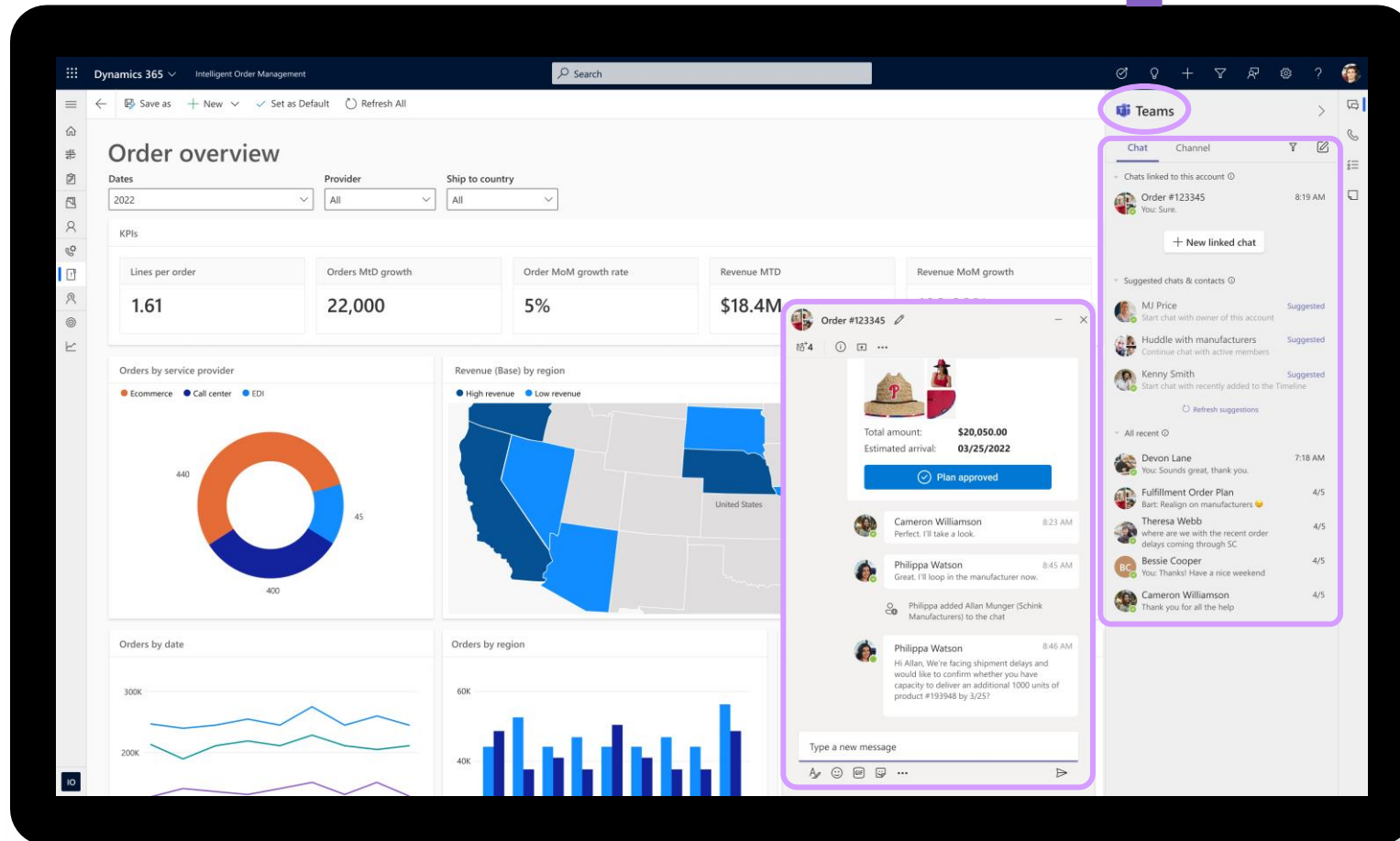
## Intelligent Order Management Portal

Return order created in Intelligent Order Management with the customer selected options from the previous step



# Proactively respond to supply chain disruptions through collaboration

Speed up supply chain flow of work, enabling anyone to **streamline work collaboration** with Microsoft Teams—at no additional cost.



Focus on what matters with contextual embedded Teams calls

**83% of Teams users** agreed that "Microsoft Teams helped my organization improve customer experiences"<sup>1</sup>

Empower your supply chain teams with instant contextual Teams chats and channels

With Microsoft Teams workers save on average **4 hours per week** through improved collaboration & info sharing<sup>1</sup>